



DANGA BAY
COUNTRY GARDEN

LIFE AT ITS FINEST

— 5-STAR LIVING FOR YOU —

Experience An Exclusive Lifestyle In An Exciting Location

Nestled in the prime enclave of Danga Bay; Fringed by gentle lapping waters of the Johor Straits Is the epitome of luxury and beauty that is Country Garden Danga Bay.

Be part of a prestigious address that is A DESTINATION OF ITS OWN.

6KM TO SINGAPORE
VIA CAUSEWAY (1ST LINK)

SINGAPORE CHANGI
INTERNATIONAL AIRPORT

WOODLANDS TOWN

SINGAPORE
ZOO

MARINA
BAY
SANDS

MERLION
PARK

CLARKE
QUAY

SENTOSA

JURONG WEST TOWN

34KM TO SINGAPORE
VIA 2ND LINK

SINGAPORE SUNGEI BULOH WETLAND RESERVE

An Astounding View From Your Suite



Skylina Of Kuala Lumpur

About Malaysia

An integral part of Southeast Asia, Malaysia is politically and economically stable; thus bringing about a multitude of business opportunities. Malaysia has a unique mix of diverse traditions and modern cultures, not to mention great tropical weather and minimal natural disasters. It is a nation of many races, languages and dialects; with locals comprising of different races fluent in either English, Mandarin Chinese, Malay, Tamil or Hindi.



Top 10 Most Popular Tourism Countries In The World 2014
Movehub.com



1st Among Emerging Economies For Ease Of Doing Business 2015
World Bank DB Report



3rd Best In Healthcare Worldwide 2014
International Living's Global Retirement Index



3rd Best Place To Retire Globally 2014
International Living's Global Retirement Index



Vibrant



Integrated



Harmonious



Iskandar Malaysia is a regional centre characterized by thriving economic activity resultant of its close proximity to and inseparable business ties with Singapore. Its economy is dominated by agriculture, manufacturing, commerce and tourism. It is also Malaysia's main producer of palm oil, rubber, pineapples and bananas. Iskandar Malaysia has a multitude of locally-owned and internationally-operated industrial estates manufacturing electronic components, electrical appliances, furniture, textiles and petrochemical products for global exports.

Strategic Location



- Flagship Zone **A** JBCC: Financial, Cultural & Urban-Mix Developments.
- Flagship Zone **B** NUSAJAYA: New State Administration, Education, Medical, Leisure, Tourism & Biotech.
- Flagship Zone **C** PORT OF TANJUNG PELEPAS: Procurement, Logistics, Distribution & Multi-Faceted Industries.
- Flagship Zone **D** PASIR GUDANG: Manufacturing, Petrochemicals, Oleochemicals & Oil Storage.
- Flagship Zone **E** SENAI: International Airport, CyberCity, Aerospace & Hi-Tech Manufacturing.

Renowned Universities

University of Reading, University of Southampton, Netherlands Maritime Institute of Technology, Newcastle University of Medicine, Marlborough College, Raffles University Malaysia, Sunway University, Nanyang Technological University, National University of Singapore.



World-Class Hospitals & Medical Centres

Afiat Healthpark, Columbia Asia Hospital, Johor Specialist Hospital, Gleneagles Medini Hospital, Khazanah-Temasek Iconic Wellness Township, Thomson Medical Centre, Econ Healthcare, Regency Specialist Hospital.

Plethora of Shopping Venues

AEON Tebrau City, AEON Bukit Indah, KSL City Mall, Johor Premium Outlets, Sutura Mall, Johor Bahru City Square Mall, JBCC (KOMTAR) Mall, Plaza Pelangi, SouthKey Megamall (slated for completion 2016) and Singapore's famed Orchard Road belt.



Popular Tourist Destinations

LEGOLAND Malaysia, LEGOLAND Water Theme Park, Puteri Harbour Indoor Theme Park featuring Sanrio Hello Kitty Town and The Little Big Club, Kukup Island and Tanjung Piai (the southernmost point of Peninsular Malaysia) and Singapore's Resorts World Sentosa & Universal Studios.



Top-Notch Golf Courses

Horizon Hills Golf & Country Club, Starhill Golf & Country Club, Ponderosa Golf & Country Club, Johor Golf & Country Club.



Upcoming Infrastructure

Kuala Lumpur – Singapore High Speed Rail (HSR), Johor Bahru – Singapore Rapid Transit System (RTS).





REAP A
MULTITUDE
OF BENEFITS
FROM AN
EXCITING
LOCATION

Lay claim to the rapidly growing future of Johor Bahru by investing in an extraordinary and one-of-a-kind development that is Country Garden Danga Bay.



Culture, Arts & Heritage

JBCC merges a unique blend of old and new; with pre-war shophouses, narrow-winding streets and 1970s-style quaint kopitiams and cafes standing in stark contrast to modern skyscrapers, shopping malls and luxury hotels. Notable cultural landmarks include the Old Sultan Palace on Bukit Timbalan, the Sultan Abu Bakar Royal Palace Museum, the Johor Bahru Old Chinese Temple, the Arulmigu Sri Rajakaliamman Glass Temple and the lively JB Night Bazaar.

JBCC is progressively transforming into a Heritage City through urban mix development that combines contemporary, high-end shopping, dining, office and residential precincts with painstakingly restored pre-war shophouses.



Pre-war shophouses in JBCC

JBCC City Fringes

Modelled after the London and Melbournian City Fringes, JBCC City Fringes consist of an ambitious redevelopment concept covering its inner waterways, central parks and coastal areas; with intentions to transform Downtown JB into an avenue of high-end commercial, residential and recreational destinations. These comprises the Sungai Segget Rehabilitation, Johor Bahru Waterfront City revitalization, plus reclamation works at Lido Beach and Danga Bay coastal areas. JBCC is poised for a future featuring prime riverside boulevards & shorelines, marinas, beaches, water activity parks and cruises.



Skyline Of JBCC

The Unique Charm of Johor Bahru

Located at the southernmost tip of Malaysia, Johor Bahru City Centre (JBCC) is a busy cosmopolitan area that serves as a key gateway to Singapore's Woodlands via the Causeway (First Link). Outside of JBCC, travellers can also access Singapore via a Second Link situated at Tanjung Kupang, Johor. JBCC is a robust economic hub home to many shopping, dining, work, hotel and recreational venues like Johor Bahru City Square mall, the newly-refurbished JBCC high-end mall (KOMTAR) and Galleria @ Kotaraya mall. For those seeking a good night's rest, take comfort in indulgent establishments the likes of DoubleTree by Hilton, Puteri Pacific and Thistle Hotel.



Marina Bay Sands Singapore

Minutes To Singapore

A high-tech and modern Customs, Immigration & Quarantine Complex (CIQ) at Bukit Chagar links JBCC to Singapore's Woodlands Immigration & Customs Checkpoint. The CIQ is easily accessible by foot from Jalan Tun Abdul Razak, or through an elevated pedestrian walkway from Johor Bahru City Square mall. Travelling to Singapore is just minutes from then on.





Danga Bay

Danga Bay, together with Puteri Harbour in Nusajaya and Senibong Cove in Permas Jaya are the three most sought-after waterfront developments in Johor Bahru metropolitan currently. However, as Danga Bay is situated closest to Singapore via the Causeway (only 6km); and offers a distinct mix of exclusive residential, commercial, financial and leisure components to complement JBCC, it is the ultimate destination for those looking for an ideal address with a melting pot of facilities, services, lifestyle and culture.

That being said, Country Garden Danga Bay spans a large 57 acres in the area and features as the ONLY fully-integrated luxury development fronting the Johor Straits with a 400m private beach and marina.



A
MULTI-AWARD
WINNING
DEVELOPER
WITH
22 YEARS
OF SUCCESS





Forbes Asia's Fab Top 30 Companies (2011)

Listed On Hong Kong Stock Exchange (HK:2007;CTRYF)

More Than 200 High-End Township Developments Throughout
China, Malaysia & Australia

Serving More Than 1,000,000 Homeowners Worldwide

About Country Garden Group

Country Garden Group's first overseas venture outside of China is the exclusive Country Garden Danga Bay (CGDB) coastal development in Johor Bahru, Iskandar Malaysia. With CGDB, the company unseated market expectations by managing to hit a sales figure of MYR5.0 billion (US\$1.57 billion) on the day of its official launch. To date, more than 6000 residents from all over the world proudly call Country Garden Danga Bay their home. Similarly, its second Malaysian project in Semenyih termed Country Garden Diamond City had 70% of its total units for Phase 1 sold in early June 2014.

Country Garden's overseas venture in Australia also garnered strong sales, with 296 apartments at its Ryde Garden development sold within 6 hours in late June 2014; generating AUD180 million (US\$169 million) in the process.

Notable Awards & Achievements

2013 - Awarded China's Annual Real Estate Memorable Grand Award for Best Development

2013 - Clinched the iProperty.com People's Choice Award for Most Popular Malaysia Property for its maiden project, Country Garden Danga Bay

2014 - Bestowed the prestigious Asia-Pacific Property Awards 2014 - 2015 for Leisure Development & Commercial Landscape Architecture

2014 - Listed Top 50 in Millward Brown's BrandZ Top 100 Most Valuable Chinese Brands

2014 - Officially Selected For The International Quality Crown Award Gold Category London 2014



Asia Pacific Property
Awards 2014-2015
Best Commercial Landscape
Architecture, Malaysia



Asia Pacific Property
Awards 2014-2015
Highly Commended Leisure
Development, Malaysia



iProperty.com People's
Choice Award 2013
Most Popular Malaysia Property



Officially Selected For
The International
Quality Crown Award
Gold Category London 2014



More than 2 acres of world-class landscaped gardens filled with more than 100 different kinds of exotic flowers from the Caribbean. Awarded Asia Pacific Property Awards 2014 – 2015 for Best Commercial Landscape Architecture.

Picturesque and life-sized marine-life themed ornaments and garden displays lining our gardens, coastline, clubhouse and surroundings



Enjoy 24 hours a day, 7 days a week state-of-the-art security surveillance & patrol coupled with 4-tier security access system.

EXCLUSIVELY ELEGANT CLUBHOUSE



ACTUAL PERSPECTIVE

Our 70,000 sq. ft. Phoenix Clubhouse is now open for public viewing

3-stories of cutting-edge facades, a large fountain at its entrance to welcome visitors, a KTV room, bowling alley, Chinese & Western gourmet restaurants, wine bars, a gymnasium and plenty more recreational facilities.



ACTUAL PERSPECTIVE

A Fusion Of East & West



ACTUAL PERSPECTIVE

Chinese & Western Gourmet Restaurants

20,000 sq. ft. Of Breathtaking
INFINITY POOL



ACTUAL PERSPECTIVE

Designed to provide stunning unblocked views of the Straits of Johor, thus giving one the feeling of swimming in a boundless ocean

Featuring an AquaLoop, water slides, comfortable hardwood deck-chairs and a wading pool for children

YOUR SHOPPING HAVEN



A 640,000 sq.ft. lifestyle mall is currently under construction.
A 125m coastal beer street coined 'JB's Lan Kwai Fong' is now open for leasing.

Danga Avenue One is currently operating with over 20 well-known local and international merchants such like Tea Garden, Station One Café and Taang ShiFu.

ACTUAL PERSPECTIVE

CGDB's Integrated Waterfront Masterplan





Site Characteristics

We have allocated 10% of our overall development for green spaces and lush landscapes, which is a significant depart from the industry norm of 7%. This ensures that our residents can embrace 5-Star city living within a lush gardenscape featuring over 100 species of plants, trees and flowers within the project and along 400 meters of white sandy beach.

Ascribing to the concept of a windmill, our intricately and painstakingly designed condominium blocks at Country Garden Danga Bay feature individual building structures that efficiently capture breezes from both sea and land within the residential complex. Coupled with tall and wide window designs, this intelligent eco-model ensures smoother wind flows in and out of your exclusive suite plus lower temperatures for your living pleasure. Not to mention, this remarkable building layout results in considerable spacing of each residential block from one another in a circular pattern; thus affording 360° views of the lush scenery from every suite. Yet again, another 5-Star experience, just for you.



BAY POINT
COUNTRY GARDEN

Enjoy Coastal Residential Living Atop Lifestyle Retail. The Bay Point Condominium collection is located in the very heart of Country Garden Danga Bay, Johor Bahru, Iskandar Malaysia. As the name suggests, these condominiums sit on the most beautiful stretch of coastal land in the Danga Bay area, thus giving them spectacular panoramic views of the Straits. At Bay Point, residents will get to enjoy a private beach and marina, not to mention an in-house cinema, hypermarket and a lifestyle mall. All these are intricately designed to bring the 'Downtown Living Experience' right to your doorstep.

The Bay Point Condominium collection presents a rare combination of exclusive residential, commercial and leisure facilities ALL IN ONE PLACE. It is undeniably, 'The Lifestyle Choice For All'.



BAY LAUREL
COUNTRY GARDEN

Enjoy utmost serenity and calm away from the bustling life you are all too accustomed to. Appreciate the wondrous coastline as you look out your bayfront window. The Bay Laurel exudes luxuriant style and effortless charm most fitting you. Your Ideal Living and Growing Space in A Rare Oasis.



LOVELL
COUNTRY GARDEN

Be part of a unique clique in Country Garden Danga Bay. At The Lovell, you can take pleasure in the knowledge that your home features low-density living by a beautiful beach; and espouses a multitude of top-notch club amenities plus an exclusive coastal bar street barely a walk away.



AMBERSIDE
COUNTRY GARDEN

Located close to the Grand Entrance to Country Garden Danga Bay are the PINNACLES OF INDULGENCE you can proudly call your own! Be greeted day in and day out by eye-catching landmarks that thoroughly characterize luxury and simplicity at its finest.

ROYAL STRAND
COUNTRY GARDEN

Live in the majesty of nature, where you find yourself in the midst of cooling sea breezes, gentle lapping waters and lush greeneries. Debuting the tallest and most intricately-designed residence in the area, perfected only by a world-class marina beside a pristine white sandy beach. This is SEASIDE LIVING WITH SOUL.



EFFORTLESS INDULGENCE

The Podium at Bay Point offers you a private and serene place to retreat to amidst the constant noise of the city. Carefully designed with your utmost peace in mind, the Podium features elegantly crafted and ample green lungs fit for your evergreen leisure. Unwind by the pool as you enjoy majestic views of the sun reflected in the sea and the stunning cloudless sky.

FACILITIES AT BAY POINT

- | | | |
|-----------------------------|--------------------------|------------------------|
| 1. Green Lungs | 9. Children's Playground | 17. Outdoor Lounge |
| 2. Swimming Pool | 10. BBQ Area | 18. Sunken Garden |
| 3. Wading Pool | 11. Open Spaces | 19. Cascading Fountain |
| 4. Gymnasium | 12. Study Area | 20. Terraces |
| 5. Games Room | 13. Surau (Male/Female) | 21. Trellis |
| 6. Kids' Room | 14. Security Office | 22. Jacuzzi |
| 7. Multi-Purpose Hall | 15. Badminton Court | |
| 8. Changing Rooms & Toilets | 16. Pavilion | |





COOL-OFF IN STYLE

With an extraordinary focus on lush and expansive greenery, you can enjoy soothing appearances, ambient temperatures and ample shade from the sunlight at The Podium. Relaxing spaces that are simply unlike others.

FACILITIES AT BAY LAUREL

- | | | |
|-------------------------------|--------------------------|------------------------|
| 1. Green Lungs | 8. Children's Playground | 15. Cascading Fountain |
| 2. Swimming Pool (Sea-Facing) | 9. BBQ Area | 16. Terraces |
| 3. Gymnasium | 10. Open Spaces | 17. Trellis |
| 4. Games Room | 11. Study Area | |
| 5. Kids' Room | 12. Surau (Male/Female) | |
| 6. Multi-Purpose Hall | 13. Security Office | |
| 7. Changing Rooms & Toilets | 14. Outdoor Lounge | |



EXERCISE WITH VIGOUR

Offering you a wide array of amenities such as pool, gymnasium, games room, kids' room, multi-purpose hall plus changing rooms & toilets; The Podium is the perfect place to exercise away your everyday stresses in life.



FACILITIES AT THE LOVELL

1. Green Lungs
2. Pool
3. Gymnasium
4. Games Room
5. Kids' Room
6. Multi-Purpose Hall
7. Changing Rooms & Toilets
8. BBQ Area
9. Open Spaces
10. Study Area
11. Surau (Male/Female)
12. Security Office
13. Outdoor Lounge
14. Terraces
15. Trellis



EAT & PLAY AWAY

At The Podium, let your children run and play freely around the playground, wide landscaped gardens and the games room. Bring your relatives and friends here for leisure dining up high at the BBQ area and open dining spaces. A true feast for the eyes as well as the stomach.

FACILITIES AT AMBERSIDE

1. Green Lungs
2. Swimming Pool
3. Wading Pool
4. Gymnasium
5. Games Room
6. Kids' Room
7. Multi-Purpose Hall
8. Changing Rooms & Toilets
9. Children's Playground
10. BBQ Area
11. Open Spaces
12. Study Area
13. Surau (Male/Female)
14. Security Office
15. Tennis Court
16. Pavilion
17. Outdoor Lounge
18. Sunken Garden
19. Cascading Fountain
20. Terraces
21. Trellis





SHEER PLEASURE

Come home to a place you can rejuvenate. Spend your evenings resting with your sweetheart at the outdoor lounge. Have a game of chess or two with your grandfather at the open terrace. Watch your beloved children laugh out loud as you share whimsical stories of your life under the shades of the pavilion. Giving you timeless encounters, unforgettable pleasures.

FACILITIES AT ROYAL STRAND

- | | |
|-----------------------------|-------------------------|
| 1. Green Lungs | 12. Study Area |
| 2. Swimming Pool | 13. Surau (Male/Female) |
| 3. Wading Pool | 14. Security Office |
| 4. Gymnasium | 15. Tennis Court |
| 5. Games Room | 16. Pavilion |
| 6. Kids' Room | 17. Outdoor Lounge |
| 7. Multi-Purpose Hall | 18. Sunken Garden |
| 8. Changing Rooms & Toilets | 19. Cascading Fountain |
| 9. Children's Playground | 20. Terraces |
| 10. BBQ Area | 21. Trellis |
| 11. Open Spaces | 22. Jacuzzi |





SIFT
THROUGH
AN ARRAY OF
UNIT TYPES
TAILORED
TO APPEASE
YOUR
DESIRES

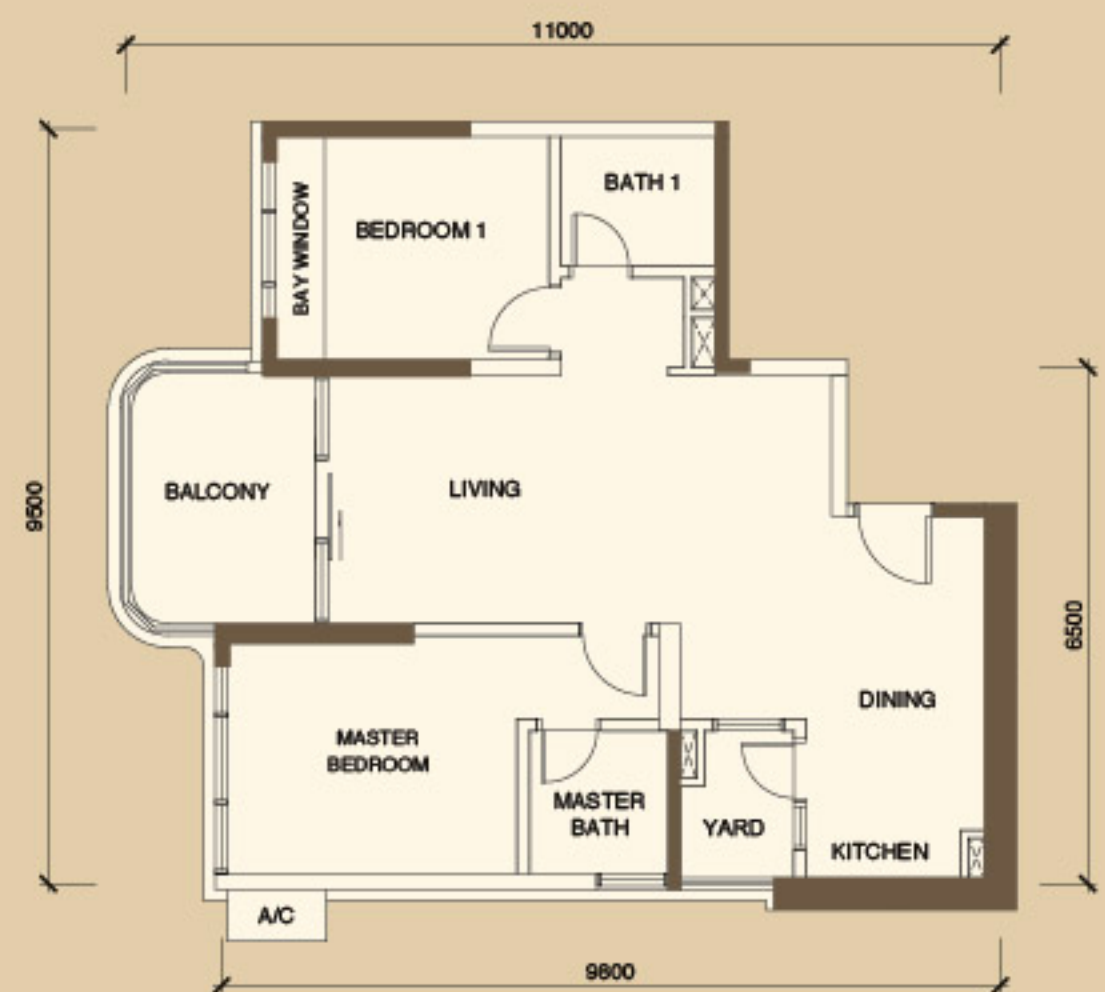




J533 - **B** SERIES

Built-up Area 816 sq.ft. / 75.81 sqm.
6 Units, 4 lifts / Flr.

- 2 Bedrooms
- 2 Bathrooms
- 1 Balcony
- 1 Bay Window



J533 - **C** SERIES

Built-up Area 882 sq.ft. / 81.94 sqm.
6 Units, 4 lifts / Flr.

- 2 Bedrooms
- 2 Bathrooms
- 1 Balcony
- 1 Bay Window

△ Note that the J533-C series contain J533-C, J533-C1 subseries. Thus, the above floor plan is actually J533-C.



J533 - **B**

J533 - **C**

*Built-up area during sales period is in accordance to our tabled price list. Actual built-up area is based on the floor plan as subject to the authorities' approval.
*All plans, specifications and information contained herein are subject to change without notification as may be required by the authorities/engineer/architect and the developer and cannot form part of any offer or contract.



J533-**E** SERIES

Built-up Area 1,232 sq.ft. / 114.46 sqm.
6 Units, 4 lifts / Flr.

- 3 Bedrooms
- 3 Bathrooms
- 1 Balcony
- 1 Bay Window

△ Note that the J533-E series contain J533-E, J533-E1 subseries. Thus, the above floor plan is actually J533-E.



J533-**F** SERIES

Built-up Area 1,264 sq.ft. / 117.43 sqm.
6 Units, 4 lifts / Flr.

- 3 Bedrooms
- 2 Bathrooms
- 3 Balconies

△ Note that the J533-F series contain J533-F2, J533-F3, J533-F4(J), J533-F5(J) subseries. Thus, the above floor plan is actually J533-F2.



*Built-up area during sales period is in accordance to our tabled price list. Actual built-up area is based on the floor plan as subject to the authorities' approval.
*All plans, specifications and information contained herein are subject to change without notification as may be required by the authorities/engineer/architect and the developer and cannot form part of any offer or contract.

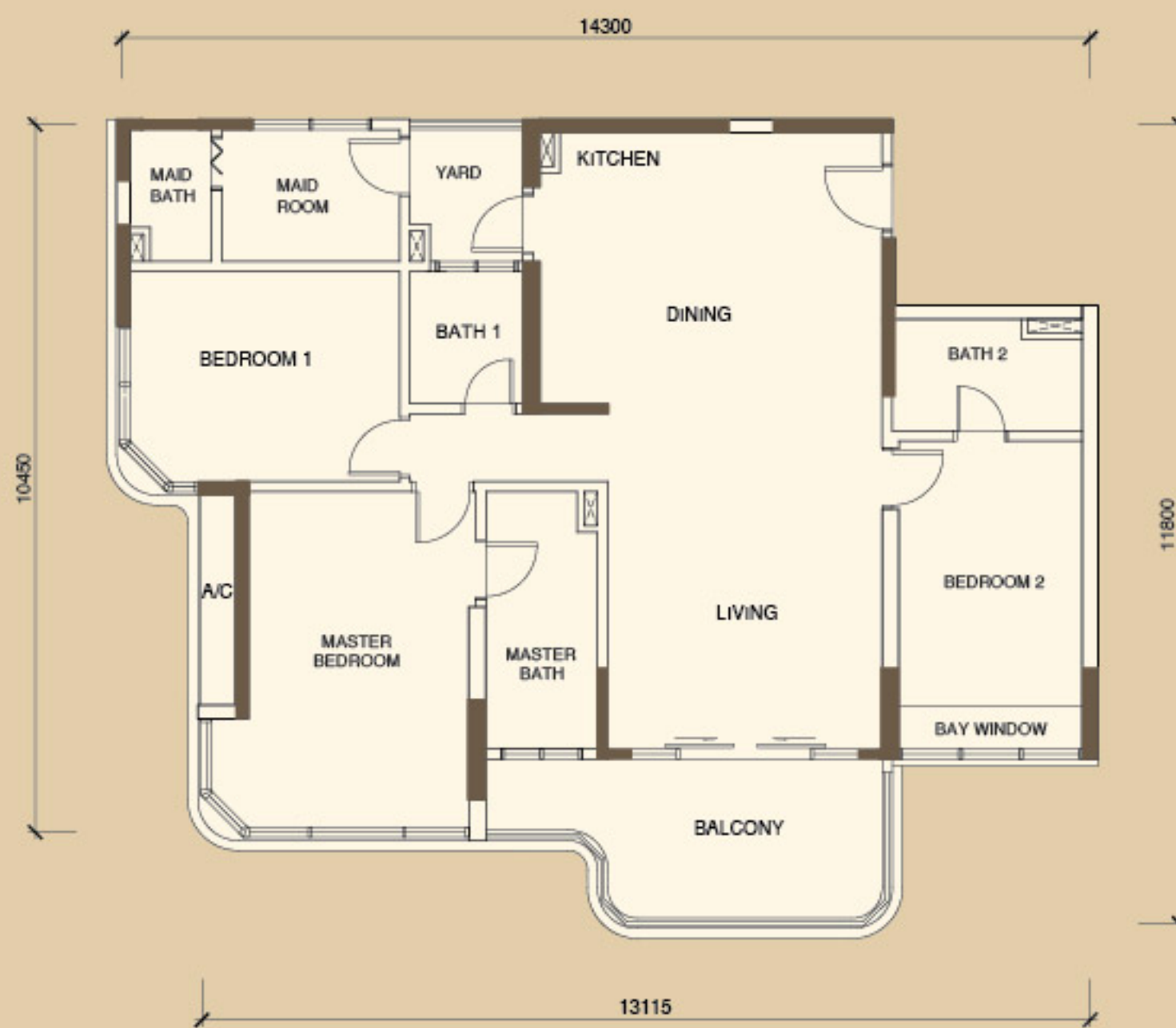


J533-G SERIES

Built-up Area 1,425 sq.ft. / 132.39 sqm.
6 Units, 4 lifts / Flr.

- 3+1 Bedrooms
- 4 Bathrooms
- 1 Balcony
- 1 Bay Window

△ Note that the J533-G series contain J533-G, J533-G1 subseries. Thus, the above floor plan is actually J533-G.



J533-H SERIES

Built-up Area 1,474 sq.ft. / 136.94 sqm.
6 Units, 4 lifts / Flr.

- 3+1 Bedrooms
- 4 Bathrooms
- 1 Balcony
- 1 Bay Window

△ Note that the J533-H series contain J533-H, J533-H1, J533-H2(I), J533-H3(I) subseries. Thus, the above floor plan is actually J533-H.



*Built-up area during sales period is in accordance to our tabled price list. Actual built-up area is based on the floor plan as subject to the authorities' approval.
*All plans, specifications and information contained herein are subject to change without notification as may be required by the authorities/engineer/architect and the developer and cannot form part of any offer or contract.

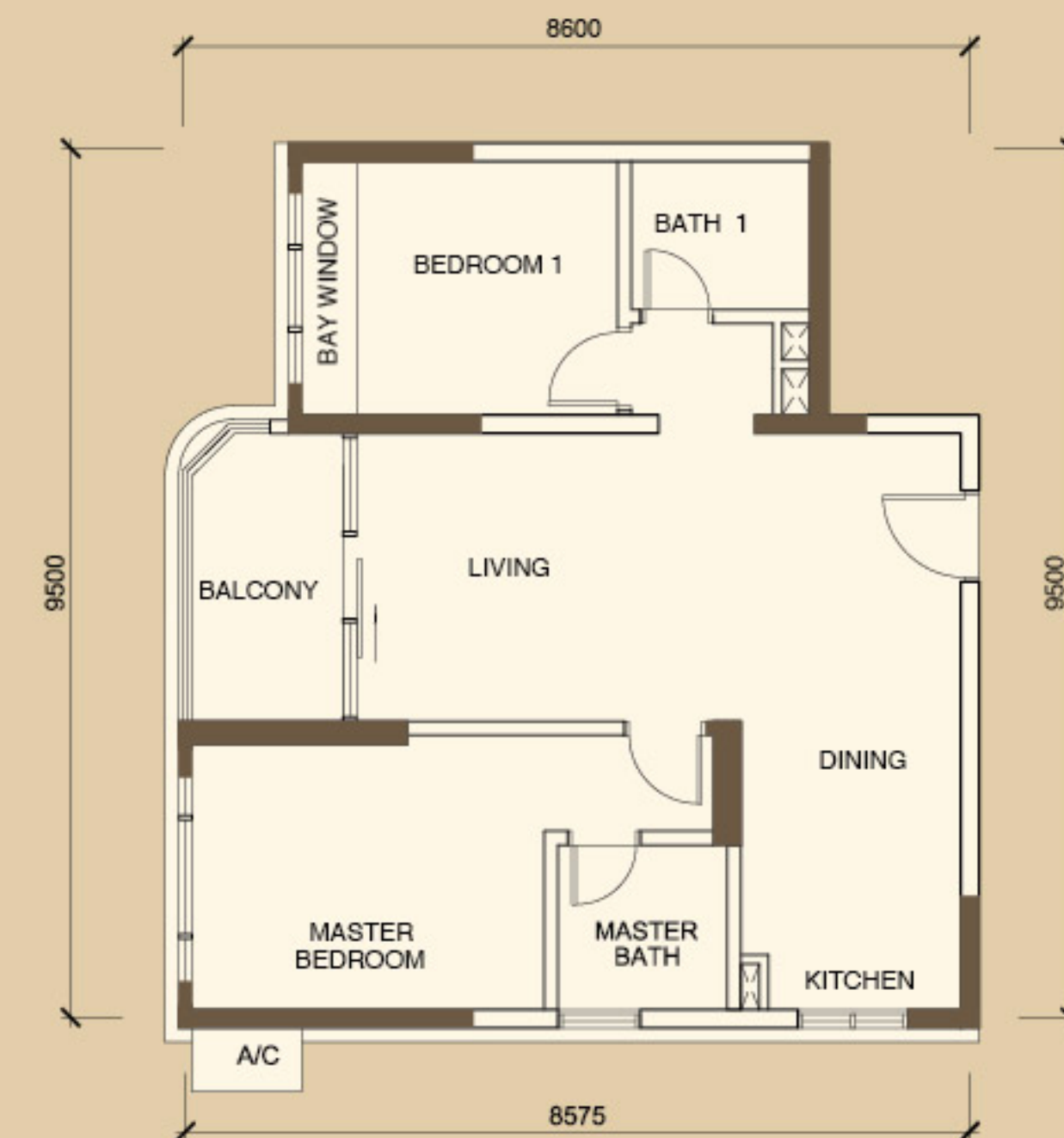


J535 - **A** SERIES

Built-up Area 1,186 sq.ft. / 110.18 sqm.
8 Units, 4 lifts / Flr.

- 3 Bedrooms
- 3 Bathrooms
- 1 Balcony
- 1 Bay Window

△ Note that the J535-A series contain J535-A, J535-A1 subseries. Thus, the above floor plan is actually J535-A.



J535 - **B** SERIES

Built-up Area 794 sq.ft. / 73.77 sqm.
8 Units, 4 lifts / Flr.

- 2 Bedrooms
- 2 Bathrooms
- 1 Balcony
- 1 Bay Window

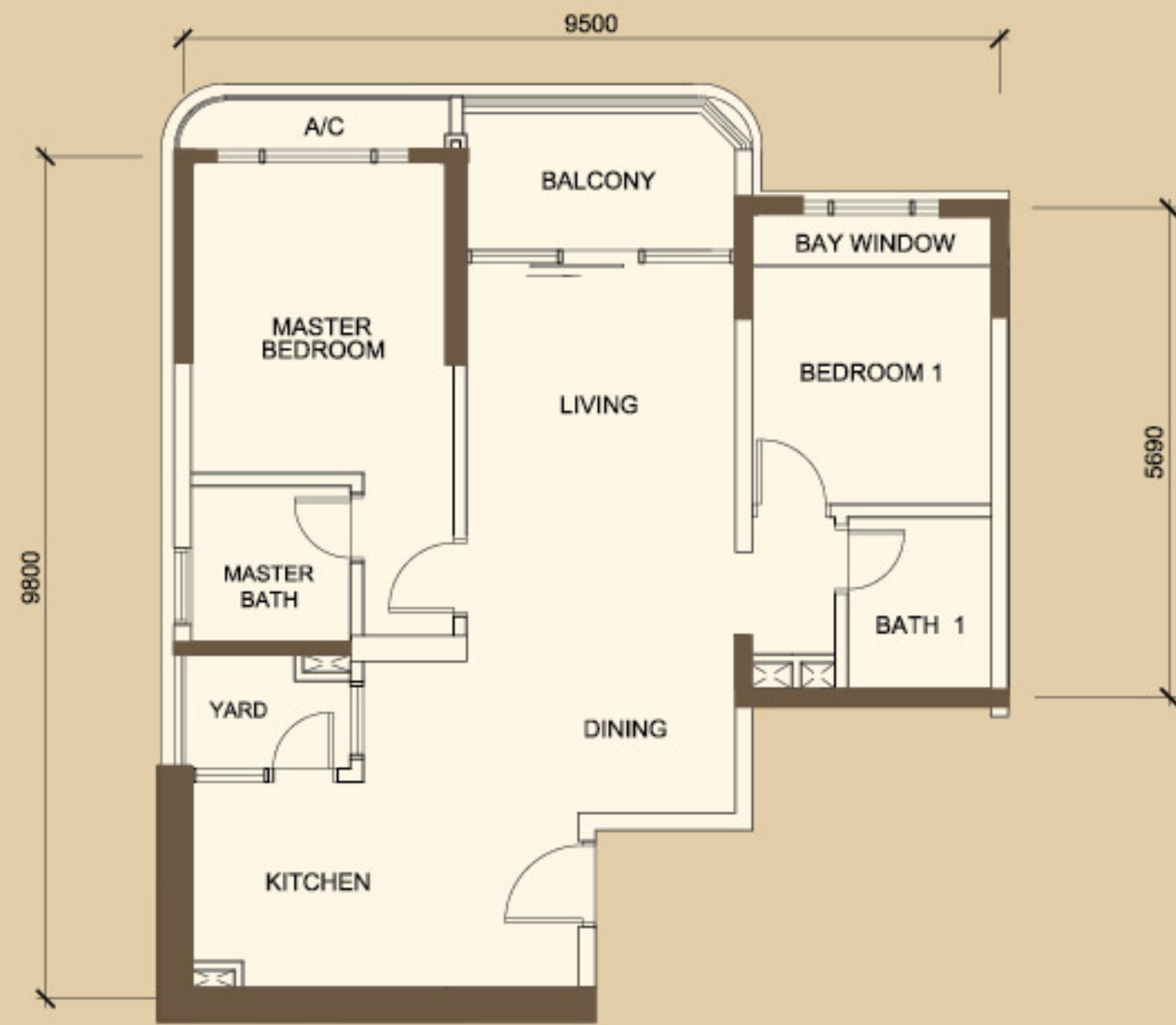
△ Note that the J535-B series contain J535-B, J535-B1 subseries. Thus, the above floor plan is actually J535-B1.



*Built-up area during sales period is in accordance to our tabulated price list. Actual built-up area is based on the floor plan as subject to the authorities' approval.
*All plans, specifications and information contained herein are subject to change without notification as may be required by the authorities/engineer/architect and the developer and cannot form part of any offer or contract.

FLOOR PLAN

MASTERPLAN

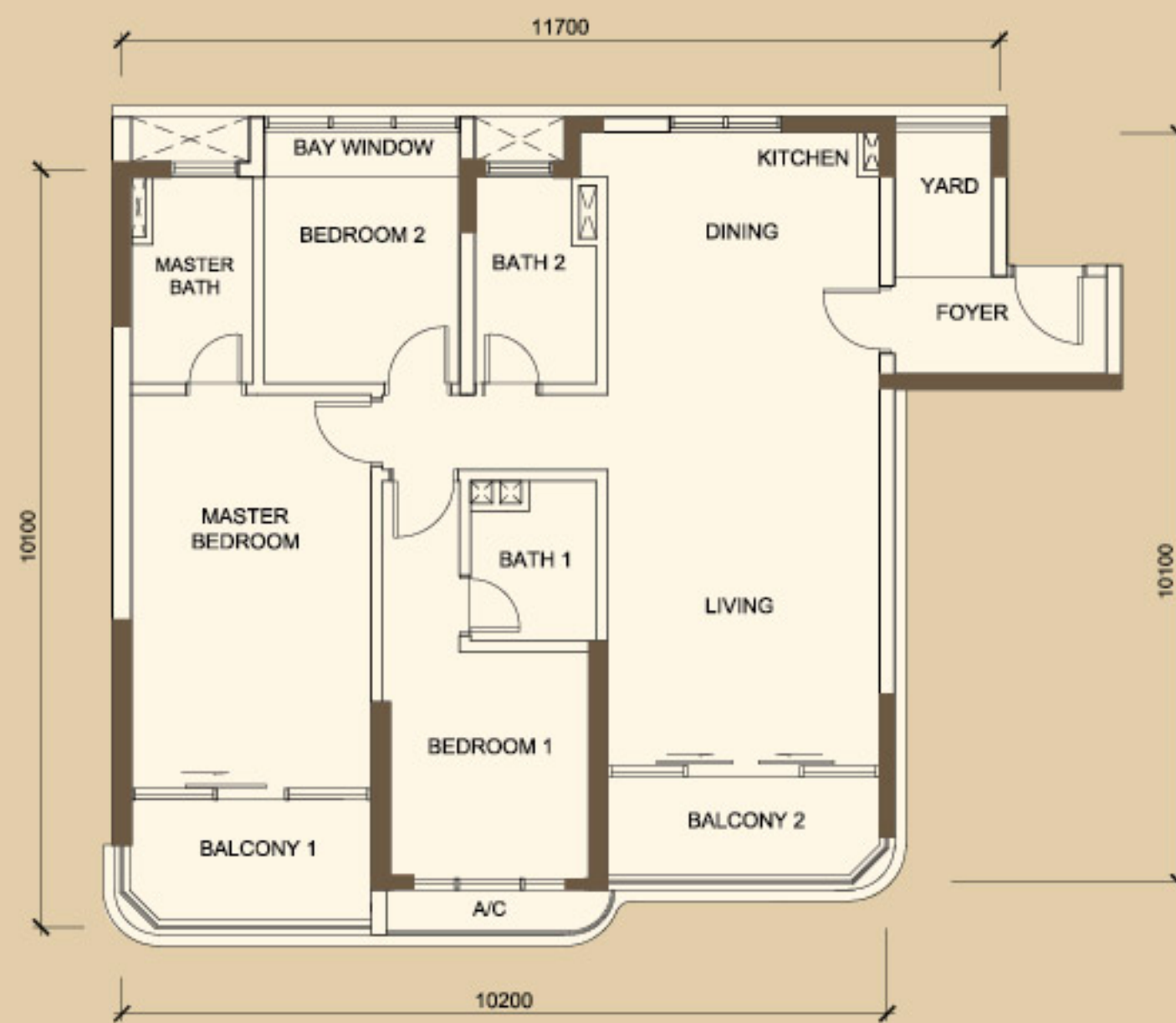


J535 - C SERIES

Built-up Area 875 sq.ft. / 81.29 sqm.
8 Units, 4 lifts / Flr.

- 2 Bedrooms
- 1 Balcony
- 2 Bathrooms
- 1 Bay Window

△ Note that the J535-C series contain J535-C1, J535-C2 subseries. Thus, the above floor plan is actually J535-C2.



J535 - D SERIES

Built-up Area 1,213 sq.ft. / 112.69 sqm.
8 Units, 4 lifts / Flr.

- 3 Bedrooms
- 2 Balconies
- 3 Bathrooms
- 1 Bay Window

△ Note that the J535-D series contain J535-D(I), J535-D3, J535-D4 subseries. Thus, the above floor plan is actually J535-D1(I).



*Built-up area during sales period is in accordance to our tabled price list. Actual built-up area is based on the floor plan as subject to the authorities' approval.
*All plans, specifications and information contained herein are subject to change without notification as may be required by the authorities/engineer/architect and the developer and cannot form part of any offer or contract.



J535 - **E** SERIES

Built-up Area 1,235 sq.ft. / 114.74 sqm.
8 Units, 4 lifts / Flr.

- 3 Bedrooms
- 3 Bathrooms
- 1 Balcony
- 1 Bay Window

△ Note that the J535-E series contain J535-E, J535-E1 subseries. Thus, the above floor plan is actually J535-E.



J540 - **A** SERIES

Built-up Area 699 sq.ft. / 64.94 sqm.

- 2 Bedrooms
- 1 Bathroom
- 1 Balcony
- 2 Bay Windows

△ Note that the J540-A series contain J540-A, J540-A (M), J540-A1, J540-A1 (M), J540-A2, J540-A2 (M) subseries. Thus, the above floor plan is actually J540-A.



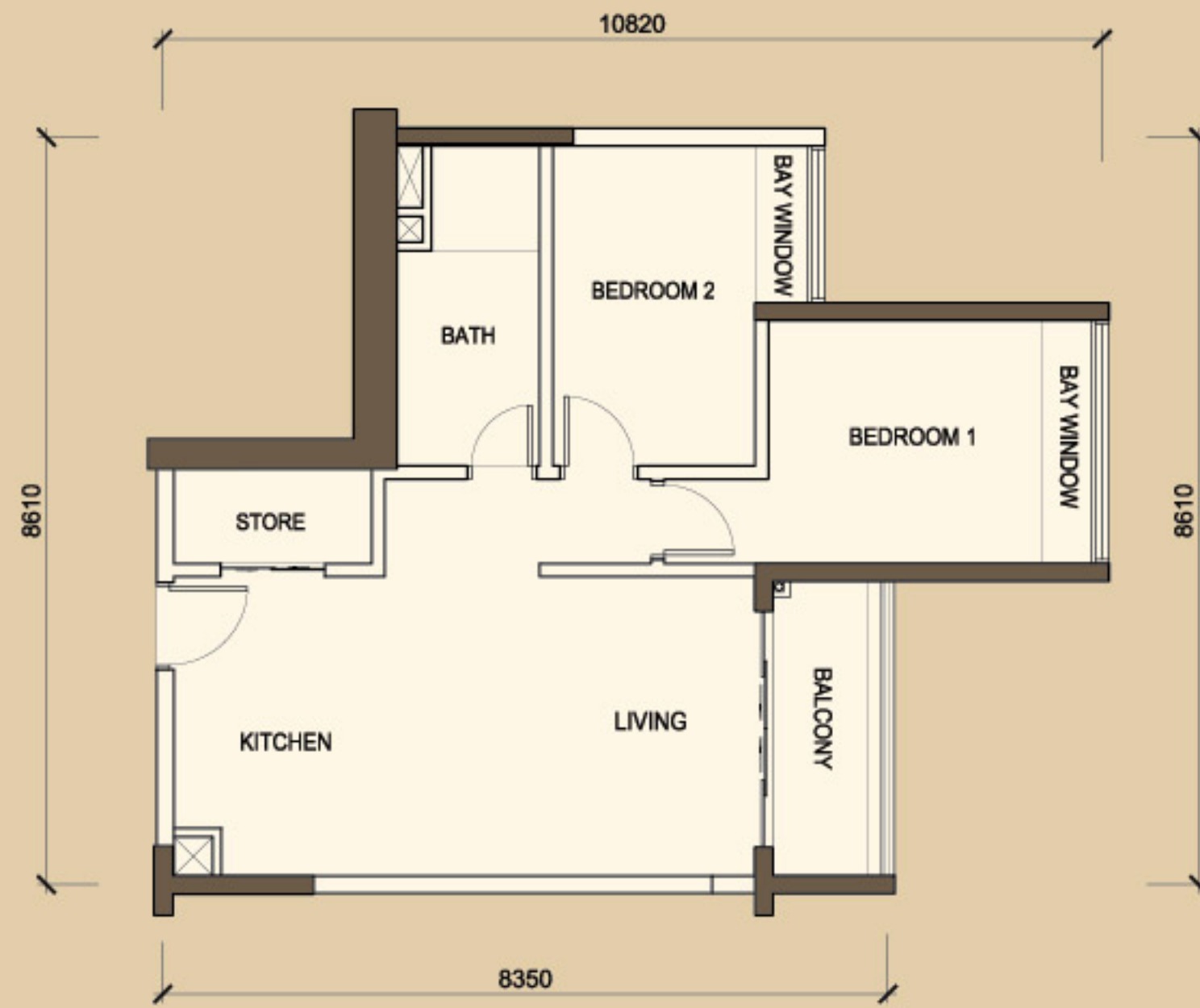
J535 - **E**

J540 - **A**

* Built-up area during sales period is in accordance to our tabled price list. Actual built-up area is based on the floor plan as subject to the authorities' approval.
* All plans, specifications and information contained herein are subject to change without notification as may be required by the authorities/engineer/architect and the developer and cannot form part of any offer or contract.

FLOOR PLAN

MASTERPLAN

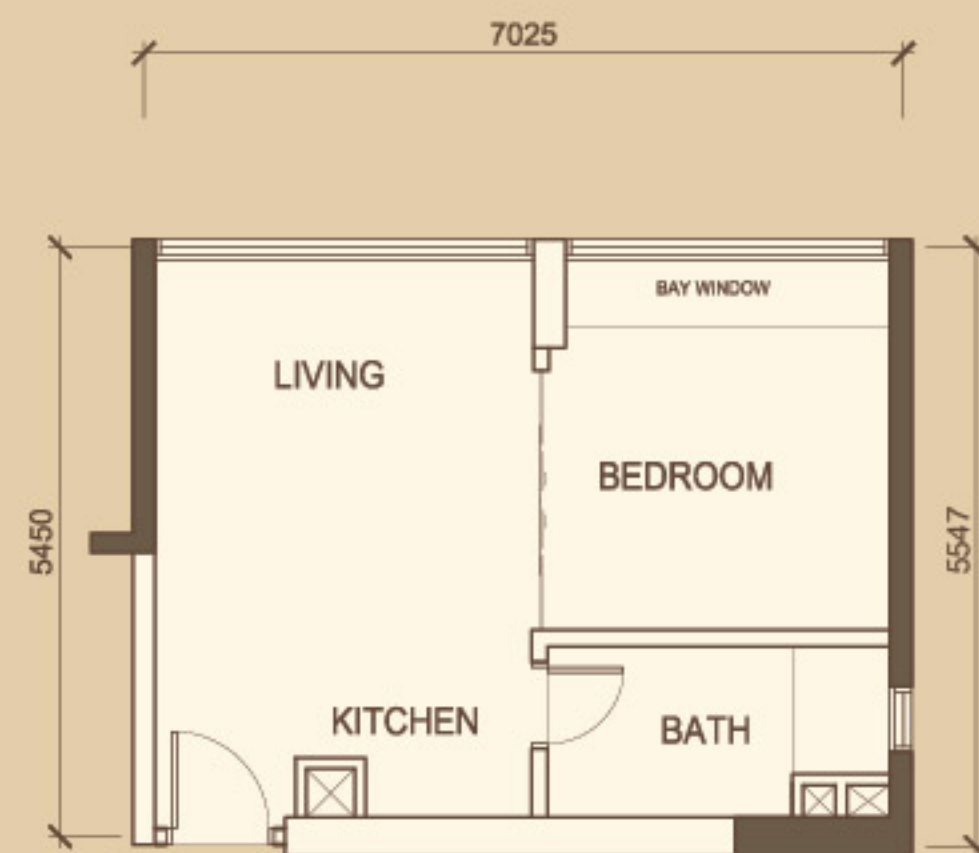


J540-B SERIES

Built-up Area 722 sq.ft. / 67.08 sqm.

- 2 Bedrooms
- 1 Bathroom
- 1 Balcony
- 2 Bay Windows

△ Note that the J540-B series contain J540-B, J540-B1, J540-B1(M) subseries. Thus, the above floor plan is actually J540-B.



J540-C SERIES

Built-up Area 407 sq.ft. / 37.81 sqm.

- 1 Bedroom
- 1 Bathroom
- 1 Bay Window



J540-B

J540-C

*Built-up area during sales period is in accordance to our tabled price list. Actual built-up area is based on the floor plan as subject to the authorities' approval.
 *All plans, specifications and information contained herein are subject to change without notification as may be required by the authorities/engineer/architect and the developer and cannot form part of any offer or contract.



J540 - **D** SERIES

Built-up Area 466 sq.ft. / 43.29 sqm.

- 1 Bedroom
- 1 Bathroom
- 1 Bay Window

△ Note that the J540-D series contain J540-D, J540-D (M), J540-D1, J540-D2, J540-D3 subseries. Thus, the above floor plan is actually J540-D.



J540 - **E** SERIES

Built-up Area 469 sq.ft. / 43.57 sqm.

- 1 Bedroom
- 1 Bathroom
- 1 Balcony
- 1 Bay Window



J540 - **D**

J540 - **E**

*Built-up area during sales period is in accordance to our tabled price list. Actual built-up area is based on the floor plan as subject to the authorities' approval.
 *All plans, specifications and information contained herein are subject to change without notification as may be required by the authorities/engineer/architect and the developer and cannot form part of any offer or contract.

SPECIFICATIONS

STRUCTURE	: Reinforced Concrete Shear Wall/ Frame
WALL	: Reinforced Concrete Shear Wall/ Brick
ROOF	: Reinforced Concrete Flat Roof
CEILING	: Skim Coat

WINDOWS	: Powder Coated, Aluminium Framed Window
----------------	--

DOORS	
Main Entrance	: Solid Timber Door
Bedrooms	: Hollow Core Door
Bathrooms/Yards/Maid/Powder	: Hollow Core Door
	: Quality Locksets

FLOORING	
Living & Dining	: Tiles
Dry Kitchen/ Powder Room	: Tiles
Wet Kitchen	: Tiles
Yard	: Tiles
Master Bathroom	: Tiles
Bathroom 2, 3 & 4	: Tiles
Master Bedroom/ Bedrooms	: Timber Strip with Skirting
Main Room	: Tiles
Private Lobby	: Tiles
Balcony	: Tiles

WALL FINISHES	
External	: Plaster with Weather Paint
Internal	: Plaster/ Skim Coat with Emulsion Paint
Master Bathroom	: Tiles
Wet Kitchen	: Tiles
Bathroom 2, 3 & 4	: Tiles

ADDITIONAL FEATURES	
Kitchen	: Hob & Hood
	: Kitchen Cabinet (Base & Top)
	: Refrigerator
Master Bedroom	: Wardrobe
Master Bedroom/ Bedrooms 2 & 3/ Living	: Air Conditioner
Kitchen or Yard	: Washing Machine

CONDOMINIUM TYPES BLOCK 1A&1B&1C&1D&1E

SANITARY FITTING	Types																				
	A	A(M)	A1	A1(M)	A2	A2(M)	B	B1	B1(M)	C	D	D(M)	D1	D2	D3	E	F	F(M)	F1	F1(M)	
WC	1	1	1	1	1	1	1	1	1	1	1	1	1	1	1	1	1	1	1	1	1
Wash Basin	1	1	1	1	1	1	1	1	1	1	1	1	1	1	1	1	1	1	1	1	1
Kitchen Sink	1	1	1	1	1	1	1	1	1	1	1	1	1	1	1	1	1	1	1	1	1
Bib Tap	4	4	4	4	4	4	4	4	4	4	4	4	4	4	4	4	4	4	4	4	4
Rain Shower	1	1	1	1	1	1	1	1	1	1	1	1	1	1	1	1	1	1	1	1	1
Hand Shower	1	1	1	1	1	1	1	1	1	1	1	1	1	1	1	1	1	1	1	1	1

ELECTRICAL FITTING	Types																				
	A	A(M)	A1	A1(M)	A2	A2(M)	B	B1	B1(M)	C	D	D(M)	D1	D2	D3	E	F	F(M)	F1	F1(M)	
Light Point	12	12	12	12	12	12	12	12	12	8	9	9	9	9	9	7	7	7	7	7	7
Ceiling Fan Point	4	4	4	4	4	4	4	4	4	3	2	2	2	2	2	2	2	2	2	2	2
Switch Socket Point	11	11	11	11	11	11	11	11	11	7	6	6	6	6	6	7	7	7	7	7	7
Kitchen Hood Exhaust Point	1	1	1	1	1	1	1	1	1	1	1	1	1	1	1	1	1	1	1	1	1
Water Heater Point	1	1	1	1	1	1	1	1	1	1	1	1	1	1	1	1	1	1	1	1	1
Air Condition Point	3	3	3	3	3	3	3	3	3	2	1	1	1	1	1	2	2	2	2	2	2
Shower Socket Point	-	-	-	-	-	-	-	-	-	-	-	-	-	-	-	-	-	-	-	-	-
Door Bell	1	1	1	1	1	1	1	1	1	1	1	1	1	1	1	1	1	1	1	1	1
Telephone Point	3	3	3	3	3	3	3	3	3	2	1	1	1	1	1	2	2	2	2	2	2
TV Point	2	2	2	2	2	2	2	2	2	1	1	1	1	1	1	1	1	1	1	1	1
Electrical Distributor Board	1	1	1	1	1	1	1	1	1	1	1	1	1	1	1	1	1	1	1	1	1

CONDOMINIUM TYPES BLOCK 2A&2B&2C /3A&3B&3C

SANITARY FITTING	Types							
	A	A(M)	A2	A2(M)	B1	B1(M)	C	D
WC	1	1	1	1	1	1	1	1
Wash Basin	1	1	1	1	1	1	1	1
Kitchen Sink	1	1	1	1	1	1	1	1
Bib Tap	4	4	4	4	4	4	4	4
Rain Shower	1	1	1	1	1	1	1	1
Hand Shower	1	1	1	1	1	1	1	1

ELECTRICAL FITTING	Types							
	A	A(M)	A2	A2(M)	B1	B1(M)	C	D
Light Point	12	12	12	12	12	12	8	9
Ceiling Fan Point	4	4	4	4	4	4	3	2
Switch Socket Point	11	11	11	11	11	11	7	6
Kitchen Hood Exhaust Point	-	-	-	-	-	-	-	-
Water Heater Point	1	1	1	1	1	1	1	1
Air Condition Point	3	3	3	3	3	3	2	1
Shower Socket Point	-	-	-	-	-	-	-	-
Door Bell	1	1	1	1	1	1	1	1
Telephone Point	3	3	3	3	3	3	2	1
TV Point	2	2	2	2	2	2	1	1
Electrical Distributor Board	1	1	1	1	1	1	1	1

CONDOMINIUM TYPES BLOCK 4A&4B/5A&5B/6A&6B/7A&7B/8A&8B/9A&9B

SANITARY FITTING	Types											
	A	A1	B	B1	J535-C1	J535-C2	D(J)	D1(J)	D3	D4	E	E1
WC	3	3	2	2	3	3	3	3	3	3	3	3
Wash Basin	3	3	2	2	3	3	3	3	3	3	3	3
Kitchen Sink	1	1	1	1	1	1	1	1	1	1	1	1
Bib Tap	8	8	6	6	8	8	8	8	8	8	8	8
Rain Shower	1	1	1	1	1	1	1	1	1	1	1	1
Hand Shower	3	3	2	2	3	3	3	3	3	3	3	3

ELECTRICAL FITTING	Types											
	A	A1	B	B1	J535-C1	J535-C2	D(J)	D1(J)	D3	D4	E	E1
Light Point	22	22	19	19	19	19	24	24	24	24	26	26
Ceiling Fan Point	5	5	4	4	4	4	5	5	5	5	5	5
Switch Socket Point	18	18	17	17	18	18	20	20	20	20	20	20
Kitchen Hood Exhaust Point	1	1	1	1	1	1	1	1	1	1	1	1
Water Heater Point	3	3	2	2	2	2	3	3	3	3	3	3
Air Condition Point	4	4	3	3	3	3	4	4	4	4	4	4
Shower Socket Point	-	-	-	-	-	-	-	-	-	-	-	-
Door Bell	1	1	1	1	1	1	1	1	1	1	1	1
Telephone Point	4	4	3	3	3	3	4	4	4	4	4	4
TV Point	2	2	2	2	2	2	2	2	2	2	2	2
Electrical Distributor Board	1	1	1	1	1	1	1	1	1	1	1	1

**CONDOMINIUM TYPES
BLOCK 10A&10B**

SANITARY FITTING	Types																			
	A	A1	B	B1	J533-C	J533-C1	J535-C1	J535-C2	D(J)	D1(J)	D3	D4	E	E1	F4(J)	F5(J)	G	G1	H	H1
WC	3	3	2	2	2	2	2	2	3	3	3	3	3	3	2	2	4	4	4	4
Wash Basin	3	3	2	2	2	2	2	2	3	3	3	3	3	3	2	2	4	4	4	4
Kitchen Sink	1	1	1	1	1	1	1	1	1	1	1	1	1	1	1	1	1	1	1	1
Bib Tap	8	8	6	6	6	6	6	6	8	8	8	8	8	8	6	6	10	10	10	10
Rain Shower	1	1	1	1	1	1	1	1	1	1	1	1	1	1	1	1	1	1	1	1
Hand Shower	3	3	2	2	2	2	2	2	3	3	3	3	3	3	2	2	4	4	4	4

ELECTRICAL FITTING	Types																			
	A	A1	B	B1	J533-C	J533-C1	J535-C1	J535-C2	D(J)	D1(J)	D3	D4	E	E1	F4(J)	F5(J)	G	G1	H	H1
Light Point	22	22	19	19	19	19	19	19	24	24	24	24	26	26	23	23	26	26	26	26
Ceiling Fan Point	5	5	4	4	4	4	4	4	5	5	5	5	5	5	5	5	5	5	5	5
Switch Socket Point	18	18	17	17	18	18	18	18	20	20	20	20	20	19	19	19	19	20	20	20
Kitchen Hood Exhaust Point	1	1	1	1	1	1	1	1	1	1	1	1	1	1	1	1	1	1	1	1
Water Heater Point	3	3	2	2	2	2	2	2	3	3	3	3	3	3	2	2	3	3	3	3
Air Condition Point	4	4	3	3	3	3	3	3	4	4	4	4	4	4	5	5	5	5	5	5
Shower Socket Point	-	-	-	-	-	-	-	-	-	-	-	-	-	-	-	-	-	-	-	-
Door Bell	1	1	1	1	1	1	1	1	1	1	1	1	1	1	1	1	1	1	1	1
Telephone Point	4	4	3	3	3	3	3	3	4	4	4	4	4	4	4	4	4	4	4	4
TV Point	2	2	2	2	2	2	2	2	2	2	2	2	2	2	2	2	2	2	2	2
Electrical Distributor Board	1	1	1	1	1	1	1	1	1	1	1	1	1	1	1	1	1	1	1	1

**CONDOMINIUM TYPES
BLOCK 11A&11B/12A&12B**

SANITARY FITTING	Types																
	B	J533-C	J533-C1	E	E1	F2	F3	F4(J)	F5(J)	G	G1	H	H1	H2(J)	H3(J)	J1	J1(J)
WC	2	2	2	3	3	2	2	2	2	4	4	4	4	4	4	5	5
Wash Basin	2	2	2	3	3	2	2	2	2	4	4	4	4	4	4	5	5
Kitchen Sink	1	1	1	1	1	1	1	1	1	1	1	1	1	1	1	1	1
Bib Tap	6	6	6	8	8	6	6	6	6	10	10	10	10	10	10	13	13
Rain Shower	1	1	1	1	1	1	1	1	1	1	1	1	1	1	1	1	1
Hand Shower	2	2	2	3	3	2	2	2	2	4	4	4	4	4	4	5	5

ELECTRICAL FITTING	Types																
	B	J533-C	J533-C1	E	E1	F2	F3	F4(J)	F5(J)	G	G1	H	H1	H2(J)	H3(J)	J1	J1(J)
Light Point	19	19	19	26	26	23	23	23	23	26	26	26	26	26	26	48	48
Ceiling Fan Point	4	4	4	5	5	5	5	5	5	5	5	5	5	5	5	7	7
Switch Socket Point	17	18	18	20	20	19	19	19	19	19	20	20	20	20	20	34	34
Kitchen Hood Exhaust Point	1	1	1	1	1	1	1	1	1	1	1	1	1	1	1	1	1
Water Heater Point	2	2	2	3	3	2	2	2	2	3	3	3	3	3	3	4	4
Air Condition Point	3	3	3	4	4	5	5	5	5	5	5	5	5	5	5	8	8
Shower Socket Point	-	-	-	-	-	-	-	-	-	-	-	-	-	-	-	-	-
Door Bell	1	1	1	1	1	1	1	1	1	1	1	1	1	1	1	1	1
Telephone Point	3	3	3	4	4	4	4	4	4	4	4	4	4	4	4	6	6
TV Point	2	2	2	2	2	2	2	2	2	2	2	2	2	2	2	3	3
Electrical Distributor Board	1	1	1	1	1	1	1	1	1	1	1	1	1	1	1	1	1

**CONDOMINIUM TYPES
BLOCK 13A&13B**

SANITARY FITTING	Types															
	B	J533-C	J533-C1	E	E1	F2	F3	F4(J)	F5(J)	G	G1	H	H1	H2(J)	H3(J)	J1
WC	2	2	2	3	3	2	2	2	2	4	4	4	4	4	4	4
Wash Basin	2	2	2	3	3	2	2	2	2	4	4	4	4	4	4	4
Kitchen Sink	1	1	1	1	1	1	1	1	1	1	1	1	1	1	1	1
Bib Tap	6	6	6	8	8	6	6	6	6	10	10	10	10	10	10	10
Rain Shower	1	1	1	1	1	1	1	1	1	1	1	1	1	1	1	1
Hand Shower	2	2	2	3	3	2	2	2	2	4	4	4	4	4	4	4

ELECTRICAL FITTING	Types															
	B	J533-C	J533-C1	E	E1	F2	F3	F4(J)	F5(J)	G	G1	H	H1	H2(J)	H3(J)	J1
Light Point	19	19	19	26	26	23	23	23	23	26	26	26	26	26	26	48
Ceiling Fan Point	4	4	4	5	5	5	5	5	5	5	5	5	5	5	5	7
Switch Socket Point	17	18	18	20	20	19	19	19	19	19	20	20	20	20	20	34
Kitchen Hood Exhaust Point	1	1	1	1	1	1	1	1	1	1	1	1	1	1	1	1
Water Heater Point	2	2	2	3	3	2	2	2	2	3	3	3	3	3	3	4
Air Condition Point	3	3	3	4	4	5	5	5	5	5	5	5	5	5	5	8
Shower Socket Point	-	-	-	-	-	-	-	-	-	-	-	-	-	-	-	-
Door Bell	1	1	1	1	1	1	1	1	1	1	1	1	1	1	1	1
Telephone Point	3	3	3	4	4	4	4	4	4	4	4	4	4	4	4	6
TV Point	2	2	2	2	2	2	2	2	2	2	2	2	2	2	2	3
Electrical Distributor Board	1	1	1	1	1	1	1	1	1	1	1	1	1	1	1	1

**CONDOMINIUM TYPES
BLOCK 14A&14B/15A&15B**

SANITARY FITTING	Types																								
	A	A1	B	B1	J533-C	J533-C1	J535-C1	J535-C2	D(J)	D1(J)	D3	D4	E	E1	F2	F3	F4(J)	F5(J)	G	G1	H	H1	J1	J2	
WC	3	3	2	2	2	2	2	2	2	3	3	3	3	3	2	2	2	2	4	4	4	4	4	5	5
Wash Basin	3	3	2	2	2	2	2	2	2	3	3	3	3	3	2	2	2	2	4	4	4	4	4	5	5
Kitchen Sink	1	1	1	1	1	1	1	1	1	1	1	1	1	1	1	1	1	1	1	1	1	1	1	1	1
Bib Tap	8	8	6	6	6	6	6	6	6	8	8	8	8	8	6	6	6	6	10	10	10	10	10	13	13
Rain Shower	1	1	1	1	1	1	1	1	1	1	1	1	1	1	1	1	1	1	1	1	1	1	1	1	1
Hand Shower	3	3	2	2	2	2	2	2	2	3	3	3	3	3	2	2	2	2	4	4	4	4	4	5	5

ELECTRICAL FITTING	Types																								
	A	A1	B	B1	J533-C	J533-C1	J535-C1	J535-C2	D(J)	D1(J)	D3	D4	E	E1	F2	F3	F4(J)	F5(J)	G	G1	H	H1	J1	J2	
Light Point	22	22	19	19	19	19	19	19	19	24	24	24	24	26	26	23	23	23	26	26	26	26	26	48	45
Ceiling Fan Point	5	5	4	4	4	4	4	4	4	5	5	5	5	5	5	5	5	5	5	5	5	5	5	7	6
Switch Socket Point	18	18	17	17	18	18	18	18	18	20	20	20	20	20	19	19	19	19	19	20	20	20	20	34	27
Kitchen Hood Exhaust Point	1	1	1	1	1	1	1	1	1	1	1	1	1	1	1	1	1	1	1	1	1	1	1	1	1
Water Heater Point	3	3	2	2	2	2	2	2	2	3	3	3	3	3	2	2	2	2	3	3	3	3	3	4	4
Air Condition Point	4	4	3	3	3	3	3	3	3	4	4	4	4	4	5	5	5	5	5	5	5	5	5	8	7
Shower Socket Point	-	-	-	-	-	-	-	-	-	-	-	-	-	-	-	-	-	-	-	-	-	-	-	-	-
Door Bell	1	1	1	1	1	1	1	1	1	1	1	1	1	1	1	1	1	1	1	1	1	1	1	1	1
Telephone Point	4	4	3	3	3	3	3	3	3	4	4	4	4	4	4	4	4	4	4	4	4	4	4	6	5
TV Point	2	2	2	2	2	2	2	2	2	2	2	2	2	2	2	2	2	2	2	2	2	2	2	3	2
Electrical Distributor Board	1	1	1	1	1	1	1	1	1	1	1	1	1	1	1	1	1	1	1	1	1	1	1	1	1

**CONDOMINIUM TYPES
BLOCK 16A&16B/17C**

SANITARY FITTING	Types																									
	A	A1	B	B1	J533-C	J533-C1	J535-C1	J535-C2	D(J)	D1(J)	D3	D4	E	E1	F2	F3	F4(J)	F5(J)	G	G1	H	H1	H2(J)	H3(J)	J1	J2
WC	3	3	2	2	2	2	2	2	2	3	3	3	3	3	2	2	2	2	4	4	4	4	4	4	5	5
Wash Basin	3	3	2	2	2	2	2	2	2	3	3	3	3	3	2	2	2	2	4	4	4	4	4	4	5	5
Kitchen Sink	1	1	1	1	1	1	1	1	1	1	1	1	1	1	1	1	1	1	1	1	1	1	1	1	1	1
Bib Tap	8	8	6	6	6	6	6	6	6	8	8	8	8	8	6	6	6	6	10	10	10	10	10	10	13	13
Rain Shower	1	1	1	1	1	1	1	1	1	1	1	1	1	1	1	1	1	1	1	1	1	1	1	1	1	1
Hand Shower	3	3	2	2	2	2	2	2	2	3	3	3	3	3	2	2	2	2	4	4	4	4	4	4	5	5

ELECTRICAL FITTING	Types																						
	A	A1	B	B1	J533-C	J533-C1	J535-C1	J535-C2	D(J)	D1(J)	D3	D4	E	E1	F2	F3	F4(J)	F5(J)	G	G1	H	H1	H2(J)